

VB-S30D

Compact PTZ Network Video Camera

The World's smallest FULL HD, Optical Pan-Tilt-Zoom network video



QUICK FEATURES GUIDE:



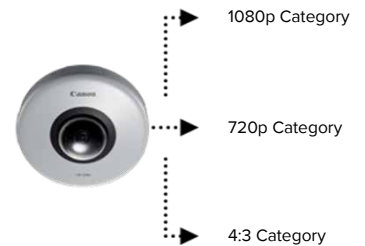
Smallest FULL HD, PTZ camera on the market

Very small design and light weight makes this camera suitable for a large range of industries and locations. Equipped with a Canon wide angle, 3.5 X optical zoom lens.



H264 Multi-Streaming

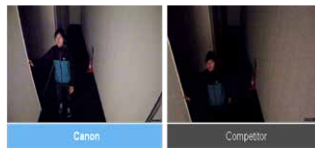
Enables simultaneous streaming for not only the same size videos, but also for different sizes as long as they are of the same category. Multiple quality and compression options across H264, JPEG and 1080P, 720P and 4:3 formats that can be viewed and recorded simultaneously according to system requirements.



Best in class Low light performance

During the day, or in the darkest of locations, you will get exceptional performance whether in colour or black and white.

Colour 0.95 lux / Monochrome 0.5 lux



Auto Smart Shade Control

SSC is an extremely important function for security purposes that maintains image sharpness when shadows are generated by backlight or other causes.



Advanced Intelligent Functions

Functions include Moving Object Detection / Abandoned Object Detection / Removed Object Detection / Camera Tampering Detection / Passing Detection

Powerful and accurate functions to allow for easier and quicker surveillance.



Easy Installation

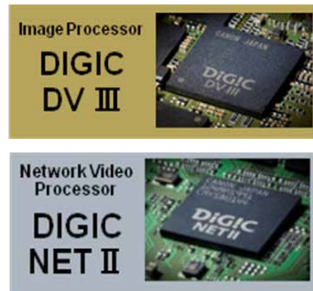
The body is small enough and light enough to be installed by just one person. Junction boxes and other accessories are not required, so they can be attached directly onto ceiling or wall surfaces.



Exclusive Dual Processing Power

Equipped with the renowned DIGIC DV III Image Processor, the same engine incorporated in Canon's EOS C300/EOS C300 PL cameras and XF Series professional video cameras.

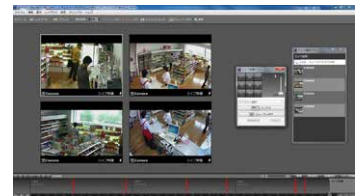
The high computational processing power results in exceptionally high quality, low noise, vivid colour reproduction, and smooth gradations. DIGIC NET II provides transmission of FULL HD resolution at 30 frames per second.



RM-LITE Software

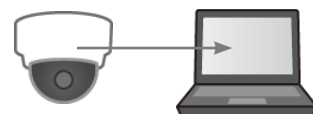
Advanced Network Video Recording Software that supports multiple cameras is included as standard, which enables recording, playback, and audio recording from multiple cameras.

For small-scale monitoring systems up to four cameras, a system can be constructed without incurring the initial cost for recording software. Larger scale software can also be purchased.



ONVIF S Compatibility

The VB-S30D support Profile S, so interoperability is guaranteed even with different ONVIF versions. This makes it easy to link with products made by other companies.



Subject to change without notice.

VB-S30D

Compact PTZ Network Video Camera

Image Sensor	1/4.85 type CMOS (primary colour filter)
Number of Effective Pixels	Approx. 2.1 million pixels
Scanning Method	Progressive
Lens	Canon 3.5x optical (4x digital zoom) zoom lens with auto focus
Focal Length	2.25 (W) – 7.88 mm (T)*1
F-number	F1.4 (W) – F2.6 (T)
Viewing Angle	Horizontal: 77.7° (W) – 20.7° (T) Vertical: 40.4° (W) – 11.6° (T)
Day/Night Switch	Auto/Manual
Min. Subject Illumination	Day Mode (colour): 0.95 lux (F1.4, shutter speed 1/30 sec., smart shade control off, 50IRE) 0.07 lux (F1.4, shutter speed 1/2 sec., smart shade control off, 50IRE) 0.025 lux (F1.4, shutter speed 1/2 sec., smart shade control on [7], 50IRE) Night Mode (monochrome): 0.5 lux (F1.4, shutter speed 1/30 sec., smart shade control off, 50IRE) 0.04 lux (F1.4, shutter speed 1/2 sec., smart shade control off, 50IRE) 0.015 lux (F1.4, shutter speed 1/2 sec., smart shade control on [7], 50IRE)
Focus	Auto/One-shot AF/Manual/Fixed at infinity
Shooting Distance (from front of lens)	0.3 m (12 in.) – infinity
Shutter Speed	1, 1/2, 1/4, 1/8, 1/15, 1/30, 1/60, 1/100, 1/120, 1/250, 1/500, 1/1000, 1/2000, 1/4000, 1/8000, 1/16000 sec.
Exposure	Auto/Auto (Flickerless)/Auto (Shutter-priority AE)/Manual (Shutter Speed, Gain)
White Balance	Auto/Light Source (Daylight Fluorescent/White Fluorescent/Warm Fluorescent/Mercury Lamp/Sodium Lamp/Halogen Lamp)/Manual (One-shot WB/R Gain/B Gain)
Metering Mode	Centre-Weighted/Average/Spot
Exposure Compensation	9 levels
Smart Shade Control	Auto/Manual/Disable Auto: 3 levels (default setting) Manual: 7 levels – Brightens shaded areas of a video
AGC Limit	5 levels
Pan Angle Range	350° (±175°)
Tilt Angle Range	90° (ceiling-mounted position: -90° – 0°) – When the horizontal direction of the camera is 0°

Moving Speed	Pan: Max. 120°/sec., Tilt: Max. 120°/sec.
Video Compression Method	JPEG, H.264
Video Size	JPEG, H.264: 1920 x 1080, 960 x 540, 480 x 270 1280 x 720, 640 x 360, 320 x 180 1280 x 960, 640 x 480, 320 x 240
Video Quality	JPEG, H.264: 5 levels
Frame Rate	JPEG: 0.1 – 30 fps H.264: 1/2/3/5/6/10/15/30 fps – Values represent streaming performance from the camera. – The frame rate may be reduced due to Viewer PC's specs, the number of clients accessing at the same time, network loads, video quality setting, type or movement of the subject or other reasons.
Max. Frame Rate	When streaming JPEG, H.264 (1920 x 1080): 30 fps When used in the following combinations: When streaming H.264(1) (1920 x 1080) and H.264(2) (all sizes) simultaneously: 15 fps When streaming H.264(1) (all sizes) and H.264(2) (1920 x 1080) simultaneously: 15 fps When streaming H.264(1) (1980 x 960) and H.264(2) (1980 x 960) simultaneously: 15 fps When streaming H.264(1) (1980 x 720) and H.264(2) (1980 x 720) simultaneously: 15 fps
I-Frame Interval	0.5/1/1.5/2/3/4/5 sec.
Simultaneous Client Access	Max. 30 Clients + 1 Admin Client – H.264: Max. 10 Clients
Camera Control	Administrator, Authorized user, Guest user (level of control varies depending on user) Max. 50 user names and passwords registered for authorized users.
Access Control	User authority (user name and password), Host Access Restrictions (IPv4, IPv6)
Encrypted Communications	SSL/TLS, IPsec (Auto Key Exchange/Manual)
IEEE 802.1X	EAP-MD5, EAP-TLS, EAP-TTLS, EAP-PEAP
Protocol	IPv4: TCP/IP, UDP, HTTP, FTP, SNMP (MIB2), SMTP (Client), DHCP (Client), DNS (Client), ARP, ICMP, POP3, NTP, SMTP authentication, RTSP, WV-HTTP (Canon proprietary), ONVIF IPv6: TCP/IP, UDP, HTTP, FTP, SMTP (Client), DHCPv6 (Client), DNS (Client), ICMPv6, POP3, NTP, SMTP authentication, RTSP, WV-HTTP (Canon proprietary), ONVIF
AutoIP	Available
Audio Compression Method	G.711 μ -law (64 kbps)

Subject to change without notice.

VB-S30D

Compact PTZ Network Video Camera

Audio Communication Method	Sound Transfer Protocol by Canon
Privacy Mask	Number of registration: Max. 8 places, Number of mask colours: 1 (select from 9 colours)
View Restriction	Available
Preset	Max. 20 positions
Intelligent Function	Video: Detection Types: moving object detection, abandoned object detection, removed object detection, camera tampering detection, and passing detection Detection Settings: Max. 15 Volume: Volume Detection
Event Trigger Type	External Device Input, Timer, Intelligent Function (Video), Intelligent Function (Volume)
Image Upload	FTP/HTTP/SMTP (e-mail) Temporary storage memory in camera: Max. approx. 5 MB Frame Rate: Max. 10 fps (JPEG) Max. 30 fps (H.264)
Event Notification	HTTP/SMTP (e-mail)
On-Screen Display	Available
Daylight Saving Time	Available
Custom Settings	Number of registers: 4 Items to Reg.: Pan/Tilt/Zoom, Exposure, Smart Shade Control, Focus, White Balance, Image Quality Adjustment, Day/Night
Viewer	Camera-side: Admin Viewer VB Viewer Client-side: RM-Lite Viewer
Admin Tools	Privacy Mask Setting Tool Panorama Creation Tool View Restriction Setting Tool Preset Setting Tool Intelligent Function Setting Tool Log Viewer Recorded Video Utility
Included Software	VB Initial Setting Tool Backup Tool Restore Tool Memory Card Unmount Tool RM-Lite Proxy Authentication Admin Tools/Admin Viewer
Language	English/German/Spanish/French/Italian/Japanese

Operating Environment (PC specifications and OS (does not apply to RM-Lite))	Recommended CPU: Intel Core i7-2600 Graphics Board: Not specified Memory: 2 GB or more Viewer Display: 1920 x 1080 or more OS: Windows Vista Ultimate/Business/Enterprise/Home Premium SP2 32/64-bit Windows 7 Ultimate/Professional/Enterprise/Home Premium SP1 32/64-bit Windows 8/Windows 8 Pro/Windows 8 Enterprise 32/64-bit Windows Server 2008 Standard SP2 32/64-bit Windows Server 2008 R2 Standard SP1 64-bit Windows Server 2012 Standard 64-bit Web Browser: Internet Explorer 8/9/10 32-bit Runtime Libraries: .NET Framework 3.5 SP1 (When using Internet Explorer 8/9) .NET Framework 4.5 (When using Internet Explorer 10)
Network Terminal	LAN x 1 (RJ45, 100Base-TX (auto/full-duplex/half-duplex))
Audio Input Terminal (common for LINE IN & MIC IN)	φ3.5 mm (φ0.14 in.) mini-jack connector (monaural) Switch LINE IN/MIC IN in the setting page. LINE IN x 1 (connect to an amplifier microphone) or MIC IN x 1 (connect to a microphone w/o amplifier)
External Device I/O Terminal	Input x 1, Output x 1
Memory Card	microSD Memory Card, microSDHC Memory Card, microSDXC Memory Card Compatible. Frame Rate: Max. 1 fps (JPEG) Max. 30 fps (H.264)
Operating Environment	Temperature: -10°C – +50°C (+14°F – +122°F) Humidity: 5% – 85% (without condensation)
Power Supply	PoE: PoE power supply via LAN cable (IEEE802.3af compliant)
Power Consumption	Max. 7.8 W
Dimensions	(φ x H) φ120 x 54 mm (φ4.72 x 2.13 in.) – excluding projections
Accessories	RBIP66DOMES Optional IP66 metal dome for VB-S Series cameras is available RBIP66SSDOMES Optional IP66 stainless steel dome for VB-S Series camera is available
Weight	Approx. <270 g

Subject to change without notice.

Canon